



Committee Categorization Update

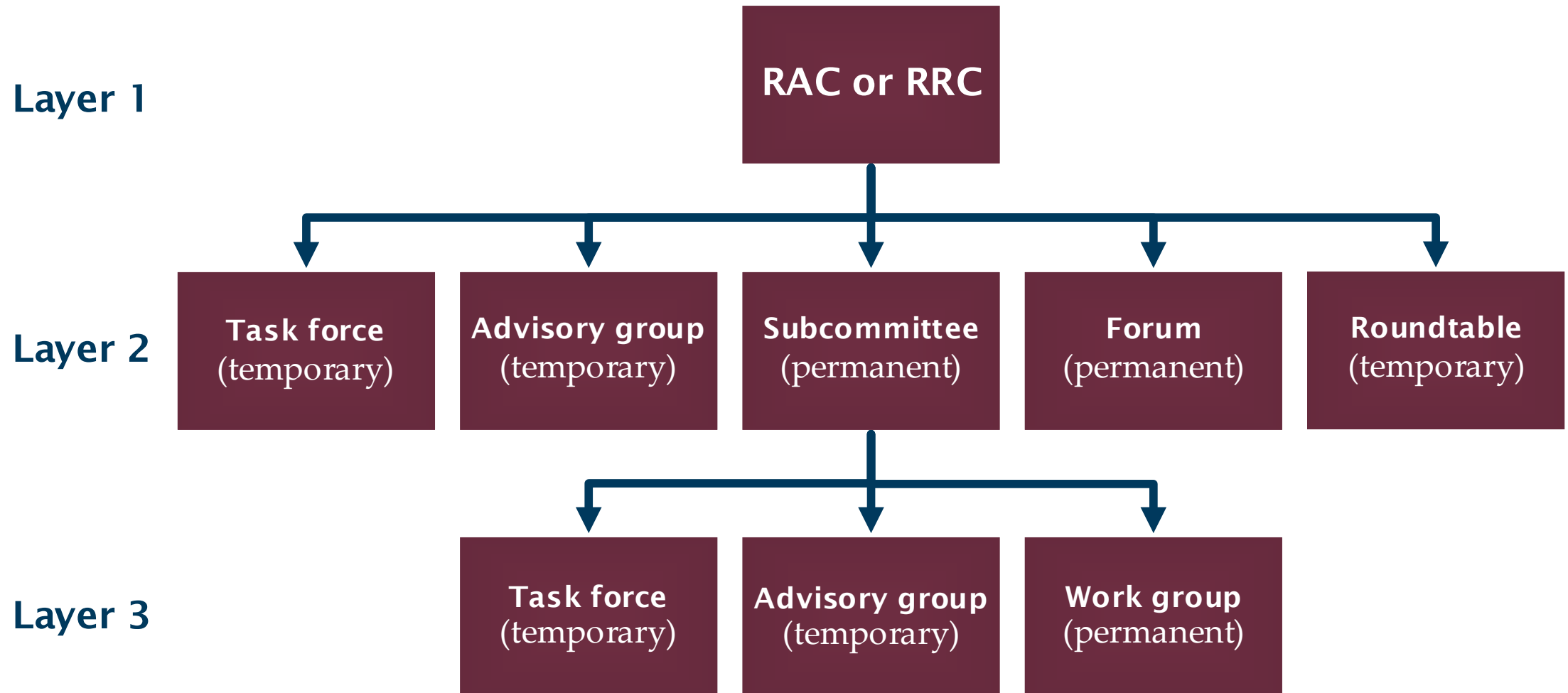
October 20, 2022

Shelli Nyland
Project Coordinator

Guiding Principles

- Nimble, efficient, and effective
- Rigid only at top level (JGC, RRC, RAC)
- Direct link between the work and reliability or security risk
- Continuous work-producing committees' work be evaluated so that it meets the changing reliability needs
- Greater reliance on temporary groups
- Permanent groups formed only when necessary
- Only two layers below RRC and RAC

Typical Technical Committee Structure



Considerations for Forming a WECC Group

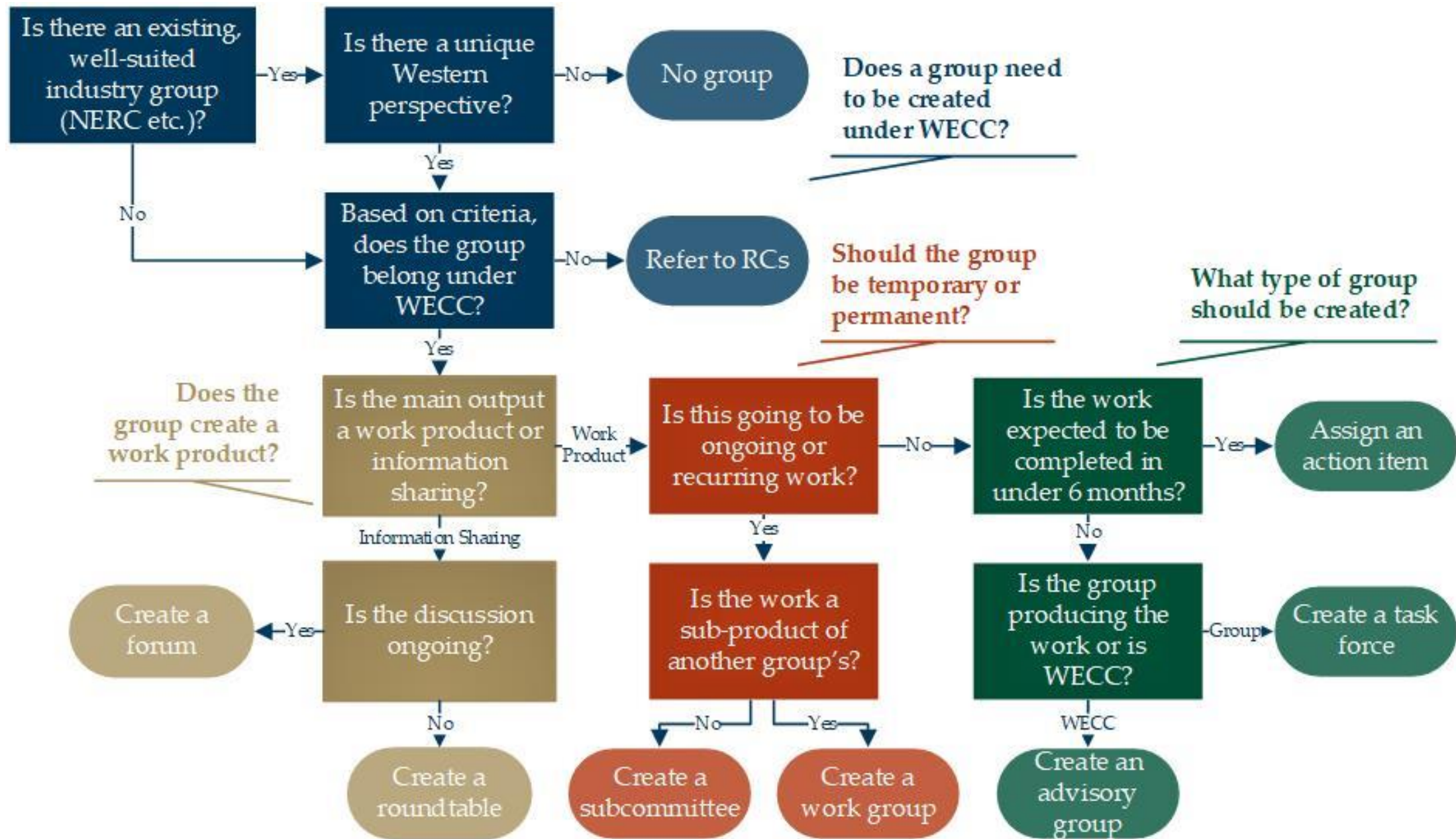
- Does the group exist under NERC or RCs?
- Can the risk be better handled under RCs?
 - Reliability risk is operational in nature
 - Operational data is with RCs
 - Operational tools are with RCs
 - Appropriate expertise is with RCs

Temporary Groups Before Permanent Ones

- First look for creating an action item (under 6 months)
- Create a temporary group (6–18 months)
- Only create a permanent group for ongoing work products

Group Types

		Ad hoc		Permanent
		Stakeholder-led	WECC-led	
Work-Producing	Independent Work	Task Force	Advisory Group	Subcommittee
	Supporting Work			Work Group
Information sharing		Roundtable		Forum

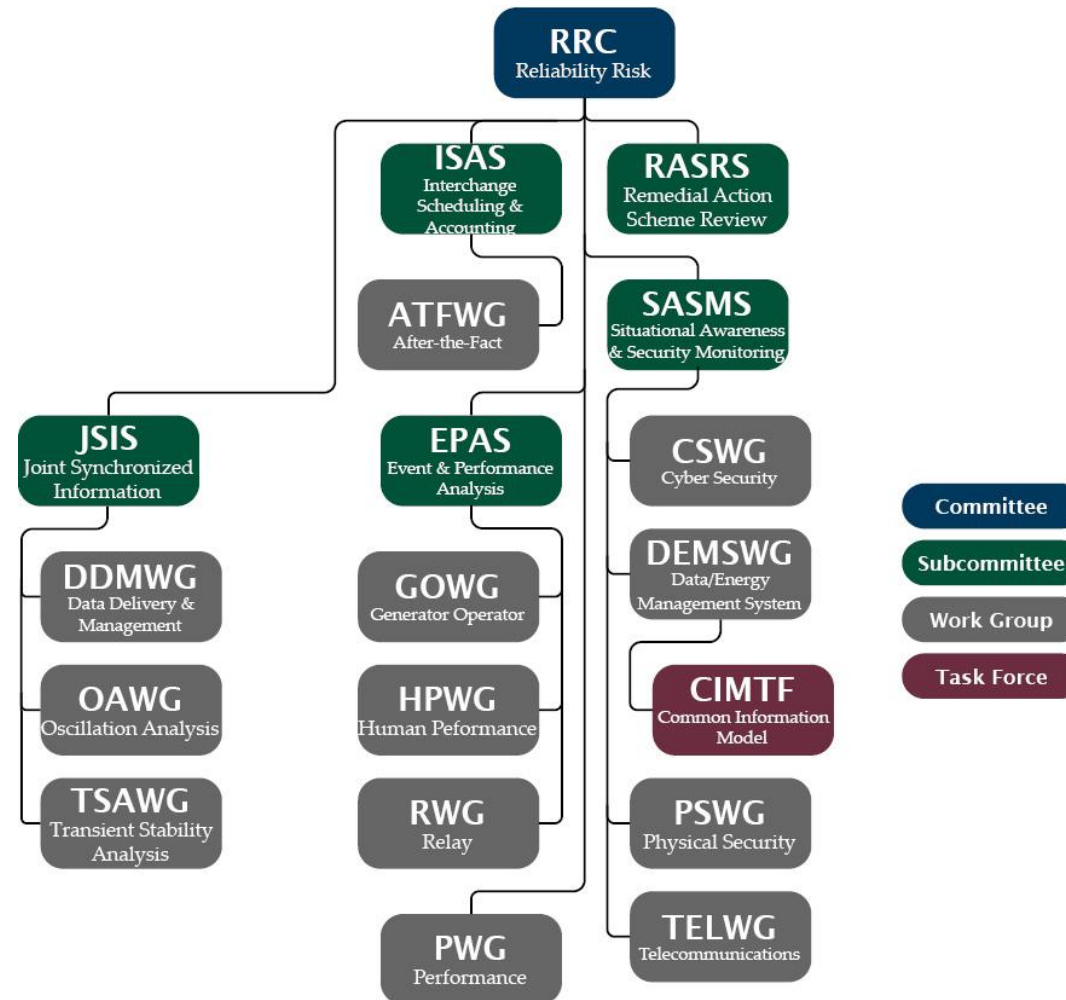


Review Schedule

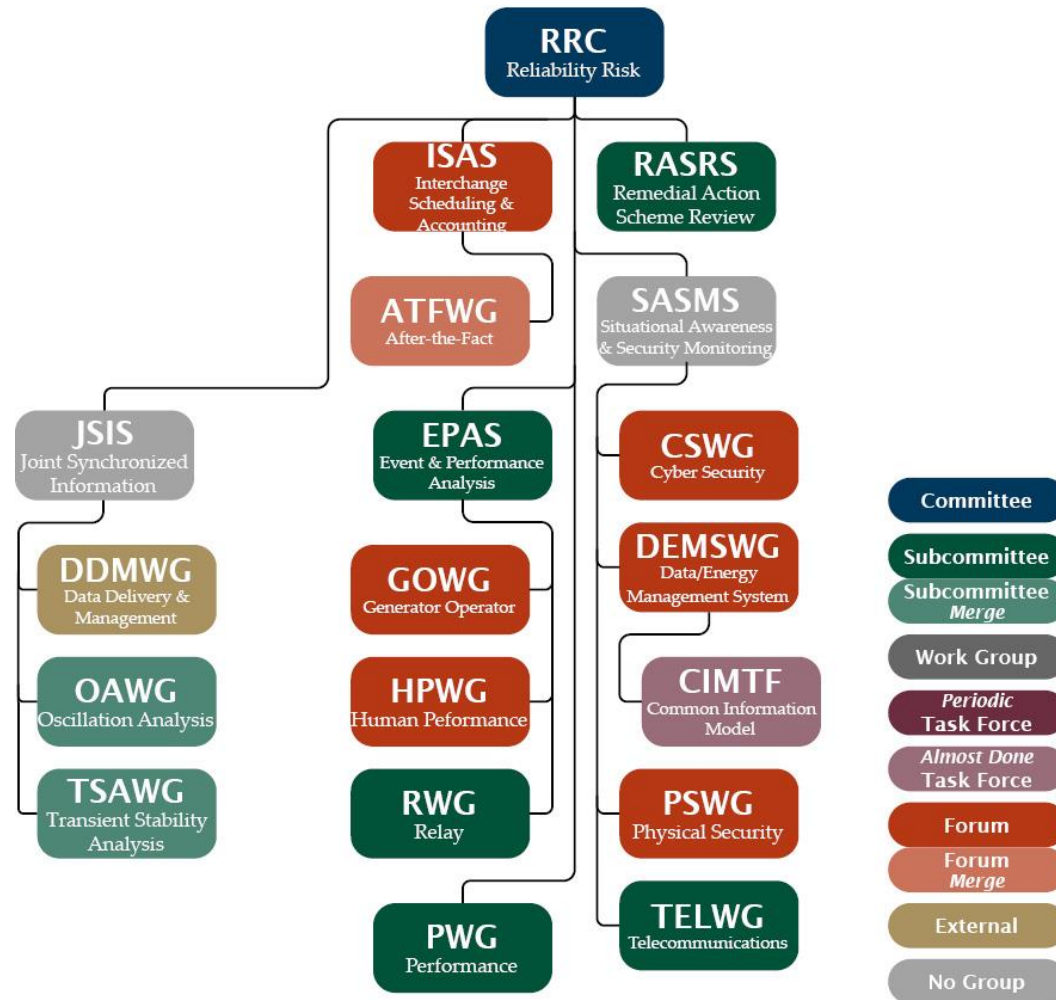
Step	Due Date
Share information about process	June 1, 2, and 22
Gather information	July 15
Review information and initial decision	September 2
Get feedback from the individual groups	October 7
Share draft structure	October 18–20
Approve structure	November 4
New structure takes effect	January 1, 2023

RRC Subgroups

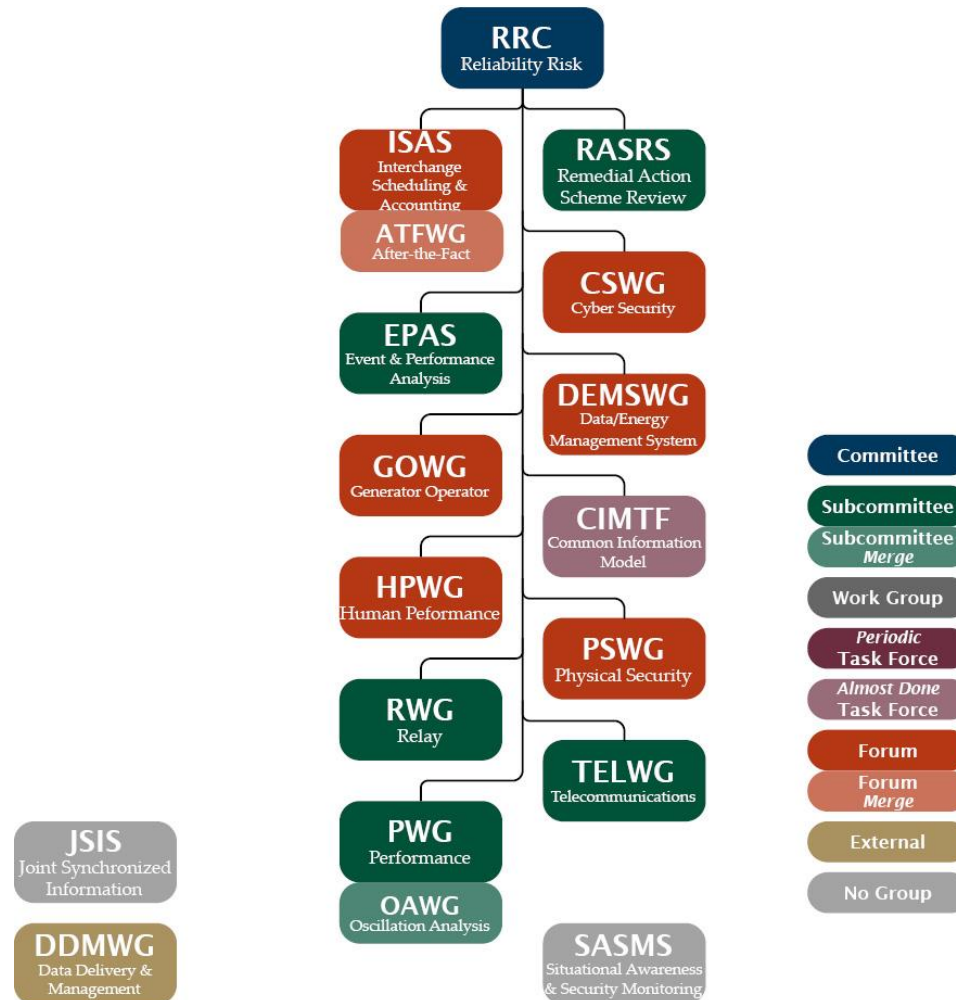
Current RRC Structure

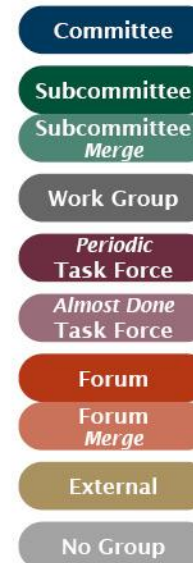
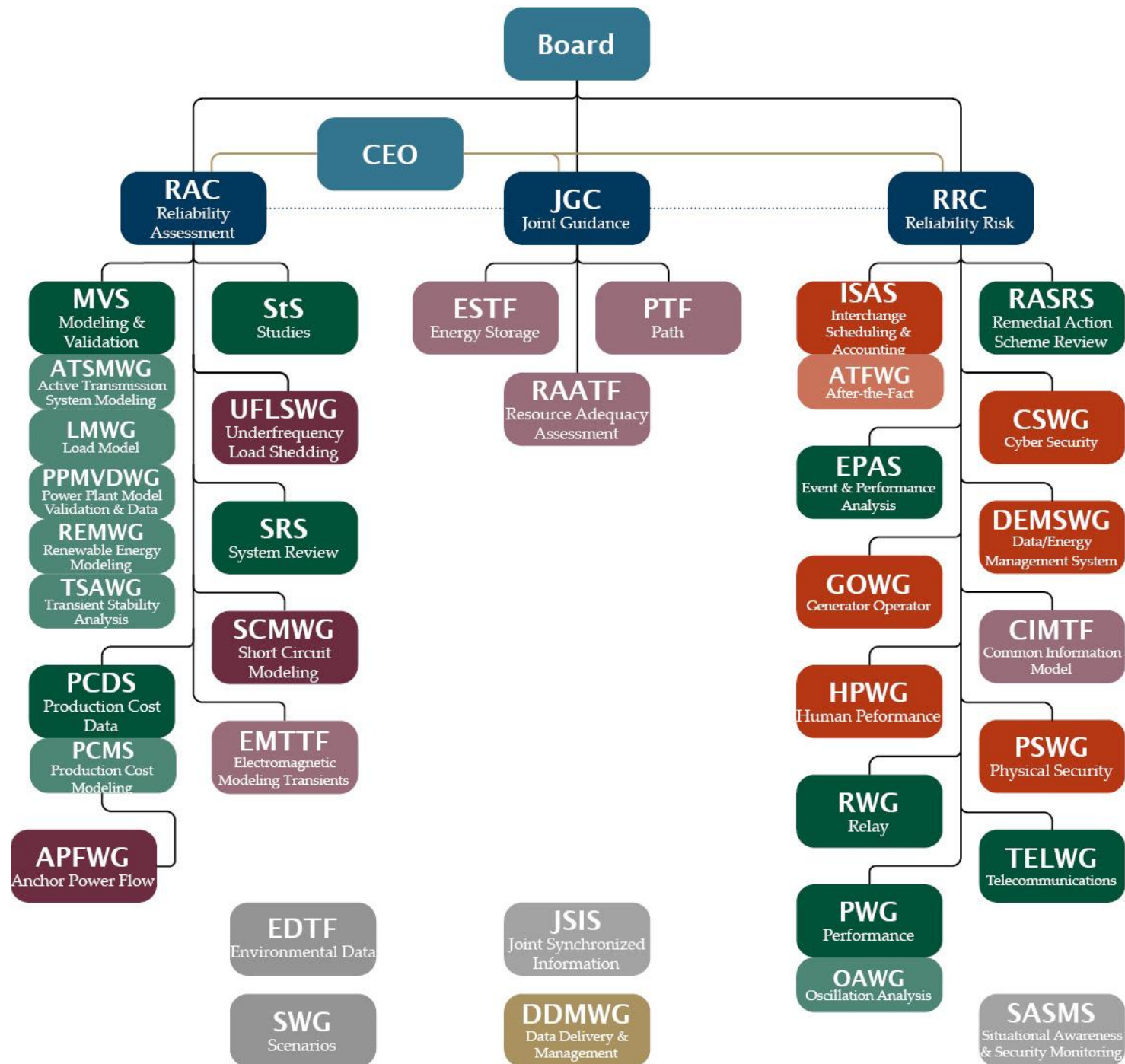


Revised RRC Categories



Revised RRC Structure







Contact:

Shelli Nyland

Project Coordinator

snyland@wecc.org